



Waterville Valley Tennis

Established 1884

Celebrating Over 140 Years of Tennis Excellence

WW.TENNISNH.COM

WATERVILLE VALLEY, NH

WELCOME TO THE WATERVILLE VALLEY TENNIS CENTER

The Waterville Valley Tennis staff welcomes you to the award-winning 18-clay court tennis center.

Whether you are playing in the round robin, picking up a match from our 'looking for a game' board, or just enjoying friends and family for a competitive game of tennis we know you will enjoy the beautiful setting along with the clay court experience.

For decades Waterville Valley has been recognized by *Tennis Magazine* as one of the 'Top 50' tennis resorts in America while also being recognized as one of the 'Top 5' in America for Best Bargain as well as a 'Top 5' for Family Resorts.

With the birth of tennisresortsonline.com in 1999 by former *Tennis Magazine* Travel and Resorts Editor Roger Cox Waterville Valley has consistently been distinguished as a Top 25 Resort in the World based on the experience of Roger and supplemented by reviews by vacationers like you. In addition to a Top 25 ranking, Waterville Valley Tennis is also rated #2 for *Best Value*.

We hope you enjoy your tennis experience and if you have any questions please ask our staff or give us a call at 603-236-4840.

ADULT & JUNIOR CLINICS OFFERED DAILY

During the summer tennis season adult and junior tennis clinics are offered daily beginning at 9am.

The junior tennis clinic is a great opportunity to introduce your child to the fabulous sport of tennis. They will learn all the strokes with particular emphasis on the forehand, backhand and serve. Also taught are net play along with doubles strategy, the rules of the game, and scoring.

You can sign your child up for one clinic to see how they enjoy it, or purchase a package of clinic's ranging from a 2-day clinic package to a 5-day clinic package. Junior clinics are broken up into age appropriate sessions to ensure fun at your child's ability level.

Adult clinics also begin at 9am. With a 4-1 student to pro ratio you have a great opportunity to improve whatever part of your game needs work.

We use two tennis courts for the adult clinic, so you are hitting continuously for 90 minutes. Whether you are drilling



with the pro, or having personal instruction on the stroke of your choice the adult clinic can change your game and make you a better player.

So whether it is a one-time clinic or a series of clinics you will immediately see the improvement in your game while having a great time doing it.

Reservations are requested for clinics or private lessons, so please call the pro shop at 603-236-4840 or better yet, stop by.

WATERVILLE VALLEY RICH IN TENNIS HISTORY SINCE 1884

Since 1884 Waterville Valley has been a tennis Mecca! Well maybe not in 1884 with one court, but in the 1930's it really took off with 6 clay courts and a host of New England summer tennis tournaments, which eventually put Waterville Valley on the map.

In 1975 Waterville Valley hit the big time becoming the summer home of the Laver-Emerson Tennis Holiday's. At the height of the tennis boom of the 70's 60 guests came to the Valley weekly to experience one of the best tennis camp experiences ever!

Can you imagine hitting everyday with two-time grand slam champion Rod Laver? Or having dinner and beverages with 12-time grand slam singles champion Roy Emerson, and then playing doubles with him the next day? Well that was what it was like back in the 70's.

With 18 clay-courts, 16 Laver-Emerson tennis pros and a wonderful setting, guests from around the world came to experience great tennis and great times. Even though the camps

WATERVILLE VALLEY TENNIS

Top 25 in the World

Ranked #3 in the World Best Value

Ranked #4 Best Overall Recreation

By TennisResortsOnline.com



PRO SHOP 603-236-4840

are no longer in existence, you can still experience great tennis with unparalleled beauty all around you.

Rod Laver Arena, Court 1 was the court where Rod Laver played numerous exhibition matches, and it is usually available upon request! You might even find a little Rod Laver magic out on that court and hit shots you never thought you could make!

The tennis center has hosted hundreds of tournaments through the years! From the American Express Challenger Series, to the Michelob Light Regional Championships, from the American Medical Tennis Association event to the IBM Northeast Regional tennis week, from the New Hampshire Open Tennis Championships to the Friendship Cup, from the Atlantic Cup to the New England Senior Fall Foliage Tennis Classic the Waterville Valley Tennis Center has been the perfect location for a wide variety of tennis events.

The tennis history is rich and we are real happy to have you here and have you become part of a new history.

DIRECTOR OF TENNIS, USPTA HEAD PRO, OWNER — TOM GROSS, JR.

Tom Gross, Jr. has been a part of the Waterville Valley Tennis Center since 1975 when he came into Waterville Valley right out of college as tennis pro with the Laver-Emerson Tennis Holiday's. He later became National Director of Tennis for the Rod Laver Tennis Holiday's before moving full-time to the valley in 1981 as Director of Tennis and Head pro. He then became owner of the tennis center and the White Mountain Athletic Club in 1995.

Tom began his teaching career at Tamarack Tennis Camp in Franconia, NH under the guidance of Bode Miller's grandfather Jack Kenney.

Having written instructional articles extensively for Tennis Magazine in Europe and World Tennis Magazine Tom likes to refer to himself as being a disciple of Rod Laver, Roy Emerson, Lew Hoad, Mal Anderson, Poncho Gonzales, and Jack Kenney.

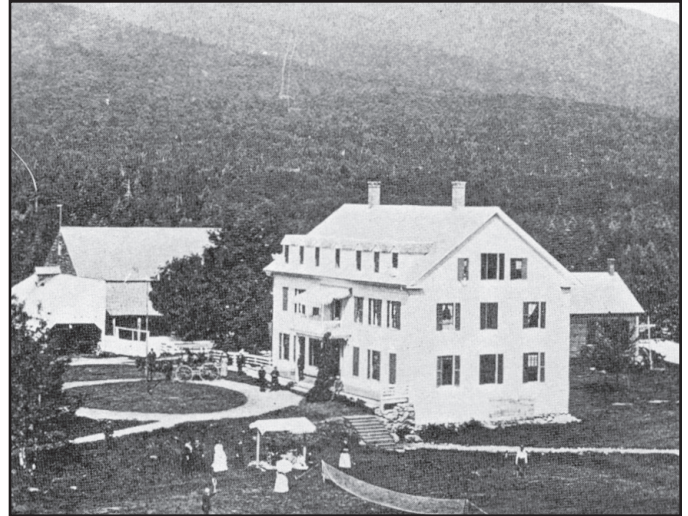
Tom likes to take what you have and make it better. Rarely does he change grips unless you cannot hit the ball, but he never changes consistency. He truly believes a player can get better in one hour. They can see the change, know what they have to do to make it part of their muscle system and then go home and do it.

He believes in the three movements of tennis; preparation, contact and follow through, he believes in a perfect toss on the serve, and he believes in a simple volley technique where the racquet goes from the ready position over to the ball and in. He believes in cutting down unforced errors and never missing easy return of serves. He believes in seeing the big show in doubles, paying attention to what's happening so you can anticipate and see a point develop before it actually develops. He believes every player who ever takes a lesson with him comes out of that lesson a better player.

HERE'S HOW YOU CAN HELP US:

Browse to www.tennisresortsonline.com and look to the left of the home page and click on **Write a Review.**

Thank you for all your support!



*Back in 1884 this was the first tennis court.
Now it is court #18.*



TENNIS ETIQUETTE

SHOES: Clay courts require smooth sole tennis shoes. Running shoes, boots, and any footwear that has a tread on them is not appropriate for clay courts. It will damage the courts! Clay court tennis shoes are available in the pro shop.

CHECK-IN: Please always check into the Pro Shop before going out to your court and please remember to bring your FREEDOM PASS.

ATTIRE - Appropriate tennis clothing is required. Men must wear shirts at all times.

PLEASE - No biking on the courts.

WATERING - During the summer months we water the clay courts every evening. If you would like to play in the early evening hours please make a reservation so we can get you on a court before we begin watering.

SPORTSMANSHIP - Please display good sportsmanship and consideration of other players at all times.

When your court time comes to an end please be courteous to those waiting for the court.

Lessons, Clinics, Packages and Court Time

DAILY CLINICS

ADULT 1 1/2 Hours Offered at 9:00am and 10:30am 4:1 Ratio Student to Pro	JUNIOR CLINICS Offered at 9:00-10am 10:00-11:00am 11:00-12:00pm
\$55	\$25 \$25 \$25

RESERVATIONS REQUESTED

CLINIC POLICY:

1 Student, 30 minute clinic 2 Students, 1 Hour clinic
3+ Students, 1 1/2 Hour clinic

PRIVATE LESSONS

	1/2 Hour	1 Hour
Director - Head Pro	\$70	\$120
Book of 3-1Hr Lessons	-	\$340
Book of 5-1Hr Lessons	-	\$560
Assistant Pro's	\$45	\$85

All private lessons are by appointment.
Please call 603-236-4840

CLINIC PACKAGES

	ADULT	JUNIOR Ages 3 - 7 9-10am	JUNIOR 8 -11 10-11am	JUNIOR 12 -15 11-12pm
2 Day	\$103	\$42	\$42	\$42
3 Day	\$155	\$64	\$64	\$64
4 Day	\$205	\$85	\$85	\$85
5 Day	\$255	\$107	\$107	\$107

TENNIS SEASON PASS INFO

FULL SEASON MAY THRU COLUMBUS DAY

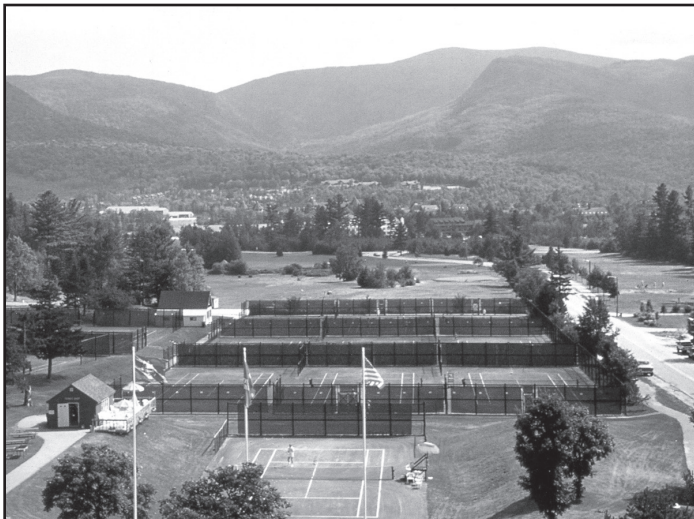
SINGLE	\$299
COUPLE	\$399
FAMILY	\$499

1 Week Unlimited Tennis

SINGLE	\$85
FAMILY	\$125

Court Time

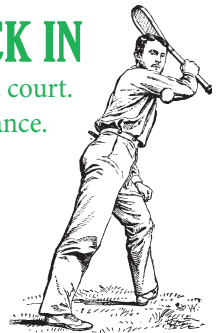
SINGLES	1 hour	\$30
DOUBLES	1 1/2 hours	\$50



ALL PLAYERS MUST CHECK IN

at the Tennis Shop prior to being assigned a court.
Reservations may be made 24 hours in advance.
Please wear clay court tennis shoes only!

PRO SHOP
603-236-4840





Waterville Valley Tennis excels in Junior and Adult instruction

First Weekend in August

The Annual 'Back in the Game' Mixed Doubles

The Annual 'Back in the Game' Mixed Doubles. The biggest event of the year for members and guests alike. It's a compass draw. So win or lose you keep on playing. Awards for the winners and finalists in both the main draw and the consolation draw. \$60 per team

New England Tennis Holidays

The tennis camp that feels like a vacation! Call 1-800-869-0949 for all the details or visit <http://www.netennisholidays.com/dates>.



Time To Restring Your Racquet

When was the last time you had your racquet restrung? Never? You don't remember? Well if you play year round you should have it restrung before the winter season and then again before the summer season. Strings lose their life. If you don't remember when you last had it restrung the time is now so drop it off at the pro shop and let us bring life back to your racquet!



MEN'S MONDAY

All men rated 3.0 and up are welcome to come on out and play men's doubles every Monday 5pm to 7pm. It is a round robin format so you'll play with a different partner against different opponents multiple times. Great fun! No charge for members and Freedom Pass holders. Minimal fee for non-members, please check in at pro shop.

\$6 BOULDER PATH ROAD IN THE HISTORIC NORTH END OF WATERVILLE VALLEY

WEDNESDAY SOCIAL

Every Wednesday you are invited to come on out and join the Wednesday Social! Beginning at 4pm and running till 6pm you will enjoy a mixed doubles round robin format. You'll play with different partners against different opponents multiple times. Following play you'll enjoy a soiree from 6pm until 7pm. Court fees are included for members and Freedom Pass holders. Court time must be purchased if you are a non-member or do not have a Freedom Pass. Minimal fee required for beverages.



LOOKING FOR A GAME?



For those in search, the Waterville Valley Tennis Center will always find you a game. We have the very popular sign-up board inside the tennis pro shop where you can print your name, phone number, playing ability and date of departure.

Many players use the board during their stay and always have great success in finding players of comparable ability. Also, check in with the tennis staff who can assist in finding you a game with our many property owners who may be in the Valley.

ADULT ROUND-ROBINS
Friday, Saturday and Sunday
THE BEST WAY TO MEET NEW PLAYERS

Come and try our very popular daily round robins for players rated 3.0-3.5 (advanced intermediate) and up. The top courts may be seeded depending on the strength of players. Play begins at 9:30am and runs for 2 hours. At \$2 a day, plus court fees for non members, it's a great way to work on your game while meeting new players.

For more info call the Tennis Center at 603-236-4840